

A photograph of three lit WoodWick candles in glass containers of different sizes, arranged on a wooden tray. The candles are a light blue color and have a warm, glowing flame. In the background, there is a large green plant with dark leaves. The overall mood is cozy and inviting.

# WW WoodWick® — crackles as it burns™ —

Autumn / Winter 2021 Trade Catalogue

INDULGE — *your* — SENSES

# WELCOME

Since its beginning WoodWick® has created multi-sensory experiences that add a personal, elegant finish to the home. WoodWick® candles with distinctive wooden wicks, sophisticated fragrances and premium designs, provide a unique experience to indulge the senses.

Our patented wick designs create a beautiful even burn and evoke the soft sounds of a crackling fire. While the trend forward fragrances create an atmosphere that feels tailor made.

The WoodWick® range provides little moments of luxury and offers a chance to authentically express style in every space with candles and auto products.

Read on to discover more about the **NEW** Autumn / Winter 2021 range.

## NEW FRAGRANCES

Emerging fragrance trends have inspired the introduction of new seasonal scents and Trilogy combinations, based on key ingredient notes such as patchouli, suede, juniper and red berries.

*page 06*



NEW

NEW Autumn Fragrances *page 06*



NEW Winter Fragrances *page 08*



NEW Trilogy *page 10*

# CONTENTS

*page 04* The WoodWick® Experience

*page 05* Range & Technologies

*page 06* **NEW** 2021 Fragrances

*page 10* **NEW** 2021 Trilogy

*page 12* Trilogy

*page 14* Auto Reeds

*page 16* **NEW** Gift Sets

*page 17* Gift Boxes

*page 18* Candle Care

*page 19* DASH

*page 20* Core Fragrances

*page 21* This Month We Love

*page 22* Visual Merchandising

*page 24* Fragrance Descriptions

*page 26* Fragrance Guide

# INDULGE *your* SENSES



## SOUNDS



### CRACKLES AS IT BURNS™

The exclusive wooden wick designs are the result of years of testing and innovation to create the distinctive sound of a crackling fire.

## SCENT



### COMPLEX FRAGRANCES

Every WoodWick® candle features complex fragrances which are carefully selected and tested to help fill the room with nuanced, sophisticated scents.

## SIGHT



### INSTANT STYLE AND FRAGRANCE

WoodWick® candles feature a clean, contemporary design with refined style and elegant shapes. The flared designs create a wide burn pool for a strong, consistent fragrance experience.

# THE RANGE

WoodWick® indulges the senses with stylish products that combine carefully chosen materials and luxury craftsmanship.

## ELEGANT FORMS



### Hourglass Candles

The iconic hourglass-shaped candles fill your home with a soft crackle and indulgent WoodWick® fragrances. The candles feature a clean, contemporary design with an elegant shape. Available in Mini, Medium and Large Jars.



### Petite Candles

Ideal for candlescaping, the Petite Candles also feature our Pluswick® Innovation to create a compelling, beautiful ambiance for any gathering.



### Ellipse Candles

The ellipse-shaped candles with Hearthwick® Flame feature a natural wooden wick that creates the distinctive sound of a crackling fire. The exclusive design creates a long, dancing flame for a unique fireplace ambiance in any room. Perfect for gifting.



### Auto Reeds

WoodWick® Auto Reeds deliver a distinctive fragrance experience for every journey.

## WOODEN WICK TECHNOLOGIES

### PLUSWICK® INNOVATION



The Pluswick® Innovation features patented wooden wicks that provide a beautiful burn and create the distinctive sounds of a crackling fire.

*Featured in the Hourglass Jars and Petite Candles.*

### HEARTHWICK® FLAME



WoodWick® is the only candle brand that offers Hearthwick® Flame technology. The unique wick creates a soft distinctive crackle and a long dancing flame.

*Featured in the Ellipse Jars.*

NEW

# FRAGRANCES

*Autumn 2021*

*Launching*  
JULY 2021



Indulge your Senses with two new Autumn fragrances inspired by the emerging fragrance trends of suede and smoked walnuts.

## NEW | INDIGO SUEDE

An enticing pairing of leather and patchouli scents, layered with notes of violet, cypress and amber.

SIZE	ITEM #
PETITE	1694639E
MINI JAR	1694655E
MEDIUM JAR	1694647E
LARGE JAR	1694651E
ELLIPSE JAR	1694643E



## NEW | SMOKED WALNUT & MAPLE

Aromas of smoked wood and toasted nuts combine with notes of sweet maple to create a tempting scent.

SIZE	ITEM #
PETITE	1694640E
MINI JAR	1694656E
MEDIUM JAR	1694648E
LARGE JAR	1694652E
ELLIPSE JAR	1694644E



Available in



NEW

# FRAGRANCES

*Winter 2021*

*Launching*  
**OCTOBER**  
2021



Indulge your Senses with two new Winter fragrances inspired by the emerging fragrance trends of juniper, bourbon and red berries.

## NEW | JUNIPER & SPRUCE

The freshness of juniper berry, blue spruce and frosted sage scents, perfectly balanced with notes of tuberose and cedar.

SIZE	ITEM #
PETITE	1694641E
MINI JAR	1694657E
MEDIUM JAR	1694649E
LARGE JAR	1694653E
ELLIPSE JAR	1694645E



## NEW | ELDERBERRY BOURBON

A richly complex fragrance - the deep scents of red berries and aged wood, combine with bourbon and clove aromas.

SIZE	ITEM #
PETITE	1694642E
MINI JAR	1694658E
MEDIUM JAR	1694650E
LARGE JAR	1694654E
ELLIPSE JAR	1694646E



Available in



NEW

Launching  
OCTOBER  
2021

# TRILOGY

*Winter Fragrance*



# NEW

## NEW | HEARTHSIDE

Create a unique scent experience as layers melt together. All medium and large Trilogy candles feature the patented Pluswick® wooden wicks and the Ellipse candle features the Hearthwick® Flame.



### Elderberry Bourbon

A richly complex fragrance - a blend of red berries and aged wood scents, combined with bourbon and clove aromas.

### Humidor

A rich blend of notes: tobacco leaves, soft suede, and peach blossoms.

### Frasier Fir

Aromatic notes are expertly combined to create the essence of fresh-cut fir on a crisp winter morning.

Elderberry Bourbon

Humidor

Frasier Fir



### SIZE

### ITEM #

MEDIUM JAR

1695213E

LARGE JAR

1695214E

ELLIPSE

1695212E

Available in



# TRILOGY



Each candle in this collection offers three distinct fragrances, creating its own unique scent experience as the layers melt together.

## FOREST RETREAT

Redwood  
Amber & Incense  
Sacred Smoke

SIZE	ITEM #
MEDIUM JAR	92976E
LARGE JAR	93976E
ELLIPSE	76976E



## COSY CABIN

Evening Bonfire  
Oudwood  
Wood Smoke

SIZE	ITEM #
MEDIUM JAR	92968E
LARGE JAR	93968E
ELLIPSE	76968E



## FRUITS OF SUMMER

Pineapple  
Lemon  
Coconut

SIZE	ITEM #
MEDIUM JAR	92958E
LARGE JAR	93958E
ELLIPSE	76958E



## CAFÉ SWEETS

Vanilla Bean  
Caramel  
Biscotti

SIZE	ITEM #
MEDIUM JAR	92904E
LARGE JAR	93904E
ELLIPSE	76904E



## GARDEN OASIS

Lemongrass & Lily  
Bergamot & Basil  
Willow

SIZE	ITEM #
MEDIUM JAR	92962E
LARGE JAR	93962E
ELLIPSE	76962E



## CALMING RETREAT

Lavender Spa  
Sea Salt & Cotton  
White Tea & Jasmine

SIZE	ITEM #
MEDIUM JAR	92965E
LARGE JAR	93965E
ELLIPSE	76965E





## WOVEN COMFORTS

Pure Comfort  
Soft Chambray  
Warm Wool



SIZE	ITEM #
MEDIUM JAR	92971E
LARGE JAR	93971E
ELLIPSE	76971E

## ISLAND GETAWAY

Coastal Sunset  
Seaside Mimosa  
Island Coconut



SIZE	ITEM #
MEDIUM JAR	92967E
LARGE JAR	93967E
ELLIPSE	76967E

## NEW HEARTHESIDE

Elderberry Bourbon  
Humidor  
Frasier Fir



SIZE	ITEM #
MEDIUM JAR	1695213E
LARGE JAR	1695214E
ELLIPSE	1695212E

## SUN-RIPENED BERRIES

Currant  
Spiced Blackberry  
Black Cherry



SIZE	ITEM #
MEDIUM JAR	92972E
LARGE JAR	93972E
ELLIPSE	76972E

## WINTER GARLAND

Crimson Berries  
Frasier Fir  
White Teak



SIZE	ITEM #
MEDIUM JAR	92969E
LARGE JAR	93969E
ELLIPSE	76969E

## MOUNTAIN TRAIL

Evergreen  
Wood Smoke  
Frasier Fir



SIZE	ITEM #
MEDIUM JAR	92977E
LARGE JAR	93977E
ELLIPSE	76977E

## WARM WOODS

Fireside  
Redwood  
Sandalwood Clove



SIZE	ITEM #
MEDIUM JAR	92911E
LARGE JAR	93911E
ELLIPSE	76911E

# WOODWICK® AUTO REEDS



## SLEEK & REFINED

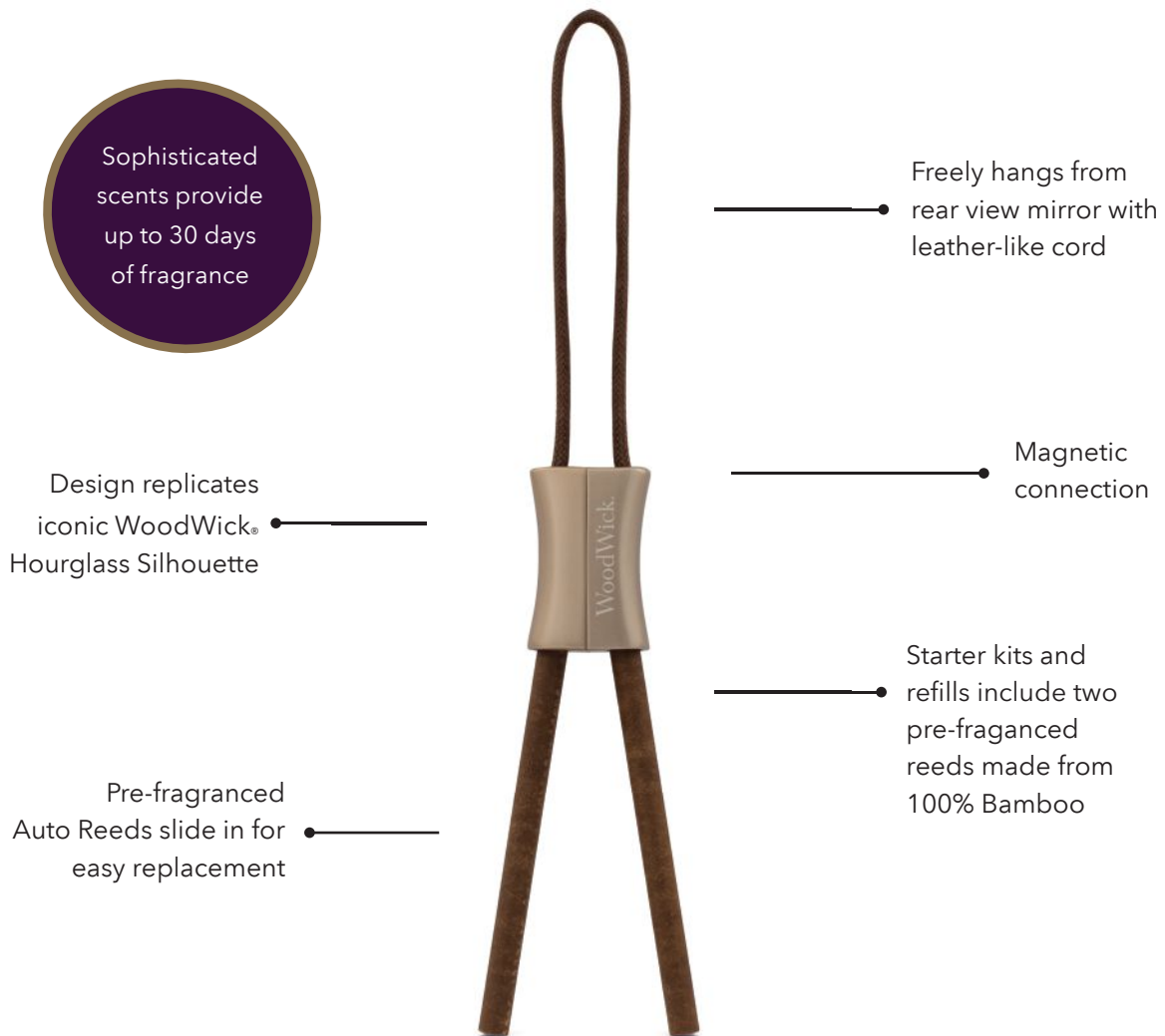
WoodWick® Auto Reed diffusers deliver a distinctive fragrance experience for every journey. Reed sticks are pre-fragranced to diffuse scent for up to 30 days.






# Refine your journey

Enjoy the complex fragrances and refined style of WoodWick® on the go.

The WoodWick® Auto Reeds Starter Kit includes a reed holder with cord and a magnetic clasp and two pre-fragranced reed sticks. Replace the natural reed sticks when new fragrance is desired, making WoodWick® Auto Reeds the perfect refillable product for fragrancing your car.



## STARTER KITS

FRAGRANCE	ITEM #
 FIRESIDE	1670135E
 LINEN	1670137E
 COASTAL SUNSET	1670136E

## REFILLS

FRAGRANCE	ITEM #
 CINNAMON CHAI	1657107E
 FIRESIDE	1657104E
 LINEN	1657109E
 LAVENDER SPA	1657110E
 BLACK CHERRY	1657112E
 WHITE TEA & JASMINE	1657115E
 VANILLA & SEA SALT	1657116E
 COASTAL SUNSET	1657117E
 SAND & DRIFTWOOD	1657118E
 VANILLA BEAN	1657105E

NEW

## Gift Sets

WoodWick® provides an elegant gift option for any occasion.

A distinctive pattern, satin ribbons and foil embellishments create a sophisticated aesthetic and hint at the premium experience found inside.

Inside you'll find carefully curated fragrance pairings. With woody and floral offerings, which include our top-selling fragrances, your discerning customers are sure to find a set that's just the right fit for their gifting needs.

1



2

3

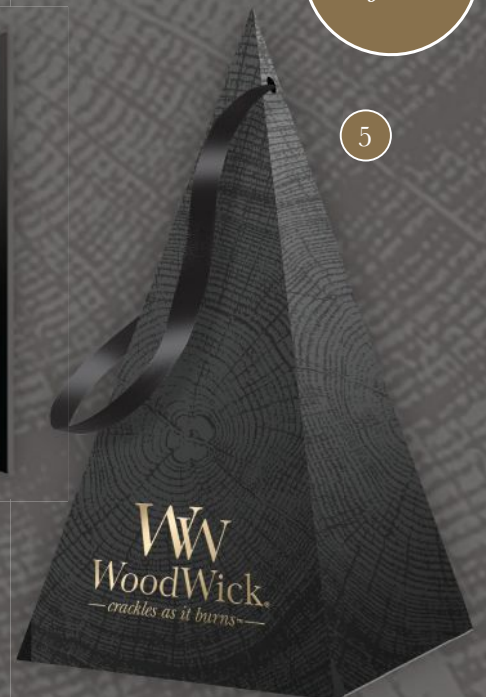


4



Festive  
Gift Set

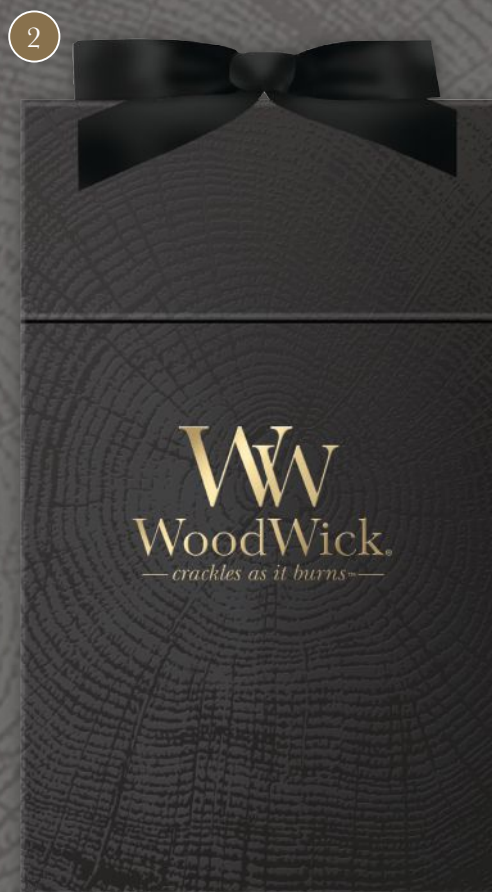
5



NEW

# MAKE YOUR OWN *Gift Box*

Inspire customers to create their own thoughtful and stylish WoodWick® gift assortment with our make your own options.



## *Everyday Gift Sets*

	DESCRIPTION	ITEM #
1	Ellipse Gift Sets 1 x Fireside Ellipse Candle	1699070E
2	3 Mini Hourglass Woody Gift Set 1 x Fireside Mini Hourglass Candle 1 x White Teak Mini Hourglass Candle 1 x Stone Washed Suede Mini Hourglass Candle	1699068E
3	3 Mini Hourglass Floral Gift Set 1 x Evening Onyx Mini Hourglass Candle 1 x Solar Ylang Mini Hourglass Candle 1 x Coastal Sunset Mini Hourglass Candle	1699066E
4	Medium Hourglass Gift Set 1 x Fireside Medium Hourglass Candle 1 x Linen Medium Hourglass Candle	1699065E

## *Festive Gift Sets*

	DESCRIPTION	ITEM #
5	Mini Hourglass Gift Set 1 x Fireside Mini Hourglass Candle	1699071E

## *Gift Boxes*

	DESCRIPTION	ITEM #
1	Multi-Form MYO Box Fits 1 Ellipse or 2 Medium Jars or 3 Mini Jars	1693997E
2	Large Jar MYO box Fits 1 Large Jar or 1 Medium Jar	1693996E

# CANDLE CARE TIPS

WoodWick® candles can occasionally display different burning characteristics than other candles.

Here are a few simple steps to enjoy the best burn every time.

1

## **Allow wax to pool**

You will experience the best burn results when the candle remains lit for 3-4 hours. For the Ellipse candles with Hearthwick® Flame, light the wick on one end and allow the flame to flow naturally across the wick.

Make sure that the wax melts to the edge of the candle before extinguishing it - this may take between 30 to 60 minutes. Allowing the wax to pool will discourage 'tunnelling' or leaving wax on the sides of the vessel.

The flame height may vary at times and occasionally even appear to self-extinguish, but this is normal. Even if you are experiencing a 'low' flame, it will continue to heat and the flame height should return.

2

## **Keep the candle within sight and away from drafts**

Always place the candle on a flat, heat-resistant surface, and make sure to keep the candle away from children, pets, flammable materials and other heat sources.

3

## **Never move or handle the candle while it's burning or while the wax is hot**

To be safe, only move your candle once the flame is extinguished and the wax has completely cooled.

4

## **Know when to 'trim' the wick**

For the Hourglass candles, the wick should be trimmed to 6mm before each use. Due to the nature of the Ellipse candles, you should not need to trim the wick. The only exception is when the flame exceeds 25mm or the candle begins to smoke.

If you need to trim the wick, carefully extinguish the candle, allow the wick and wax to cool and trim the wick to 6mm by gently breaking off the burned edges with a cloth or paper napkin. Safely remove and discard all wick trimmings and debris before relighting the candle.

5

## **Know when to say goodbye**

When there is approximately 6mm of wax remaining, it is time to stop using your candle. Extinguish the candle when 6mm of wax remains and recycle it according to your local recycling centre's instructions.

# DISCOVER DASH

IT'S FAST,  
EASY &  
FREE!

## OUR DIGITAL ASSET STORAGE HOUSE

A free resource for approved marketing materials  
exclusively for our wholesale customers.

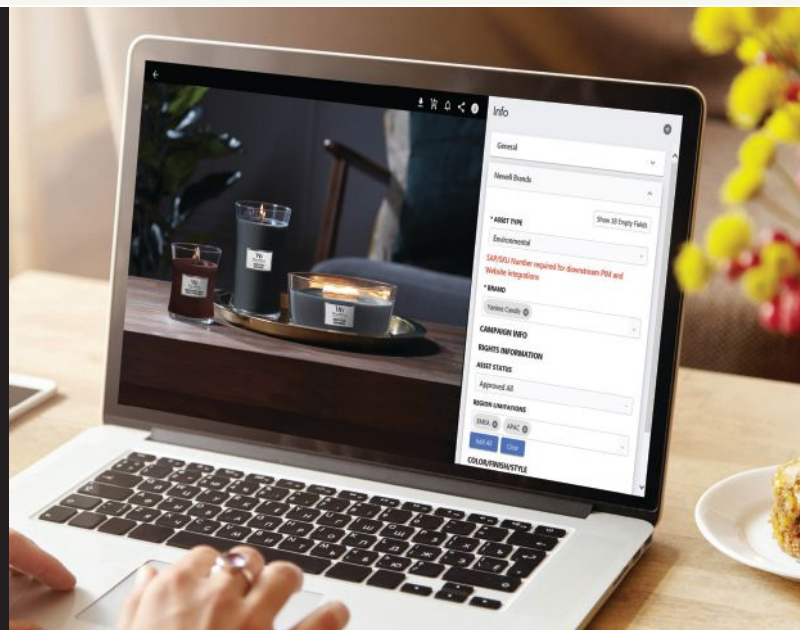
Find everything you need to advertise and promote your  
WoodWick® products, right at your fingertips, 24/7.

**WW**  
**WoodWick®**  
—crackles as it burns™—



Visit DASH for dozens of branded  
and approved materials for all  
your marketing needs including:

- Logos
- Order forms
- Signs
- Catalogues
- Product images



**NEW USERS**

Please consult with your sales representatives for registration instructions.  
[dash.newellbrands.com](https://dash.newellbrands.com)

# CORE OF YOUR SUCCESS

This selection draws on sales data and olfactive balance to create a range that perfectly captures consumer favourites and quintessential WoodWick® fragrances.



White Teak



White Tea & Jasmine



Solar Ylang



Linen



Island Coconut



Fireside



Warm Wool



Sand & Driftwood



Amber & Incense



Vanilla Bean



Lemongrass & Lily



Pomegranate



Cinnamon Chai



Black Cherry



Rosewood



Vanilla & Sea Salt



Lavender Spa



Soft Chambray



Evening Onyx



Coastal Sunset

# THIS MONTH WE LOVE

We have carefully chosen one fragrance per month to help boost store traffic, increase monthly sales and keeps your customers coming back each month.\*

*July 2021*



Seaside Mimosa

*August 2021*



Evening Onyx

*September 2021*



White Honey

*October 2021*



Pomegranate

*November 2021*



Oudwood

*December 2021*



Crimson Berries

\*Terms and conditionals apply, please consult with your sales representative.

# VISUAL MERCHANDISING

Visual Merchandising is about presenting your products in the most attractive way to engage and motivate the consumer towards making a purchase. This is done by creating displays that accentuate a product's appearance, features, benefits, and uses in a visually compelling way and presenting them in a way that drives tangible increases in revenue.

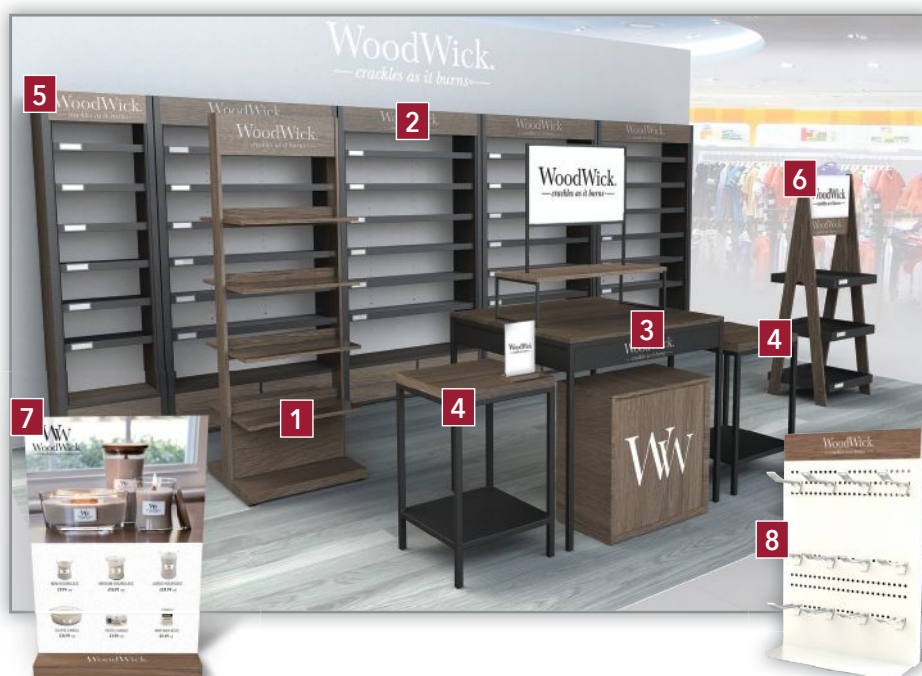
## STORE DESIGN

Store design, furniture, lighting, cleanliness and product layout, all play an important part in creating a great environment to engage the consumer, giving them a reason to shop, browse and make a purchase.

Whether you're creating a small, medium, or large shop floor layout, WoodWick® can offer you branded furniture and recommend what products to display to increase consumer interaction optimise sales results.

### FURNITURE DESCRIPTION

1	WS WW 2ft Fixture	1603721
2	WS WW Double Wall Bay Kit	1603707
3	WS WW Nesting Table Set	1603718
4	WS WW Side Table	1603719
5	WS WW Single Wall Bay Kit	1603711
6	WS WW Ladder	1603717
7	WW A4 Poster Frame	1613673
8	WS Multi Brand Cdu	1680265



## SUPPORT TOOLS

From furniture to visual merchandising guides and signage we have everything you need.

We provide Visual Merchandising guides to improve product presentation and commerciality within your store. This includes an overview of product, displays and signage.

We can highlight you as an official WoodWick® stockist using a self cling window decal.

For more information, these can be downloaded from DASH or from your customer care representative.



# RECOMMENDED WALL BAY FRAGRANCE ASSORTMENTS

WoodWick® can provide recommended fragrance and form assortments to ensure your store carries the most seasonally appropriate. Our recommended assortments are based on understanding fragrance sales, market trends and consumer buying behaviour.

## OPTION 1 | DOUBLE WALL BAY

### • 10 Core Fragrances

(Large, Medium, Mini, Ellipse and Petite)



1. Linen
2. Warm Wool
3. Fireside
4. Crimson Berries
5. Black Cherry
6. **NEW** Smoked Walnut & Maple
7. Amber & Incense
8. Fraser Fir
9. **NEW** Indigo Suede
10. Evening Onyx

## OPTION 1 | SINGLE WALL BAY

### • 5 Core Fragrances

(Large, Medium, Mini, Ellipse and Petite)



1. Linen
2. Black Cherry
3. **NEW** Smoked Walnut & Maple
4. **NEW** Indigo Suede
5. Warm Wool

**TIP:**  
SWAP Q3  
FRAGRANCES  
FOR Q4 WHEN  
SEASONS  
CHANGE

## OPTION 2 | DOUBLE WALL BAY

### • 12 Core Fragrances (Medium, Mini, and Ellipse)

### • 3 Trilogy Fragrances (Large, Medium and Ellipse)



1. Linen
2. Vanilla & Sea Salt
3. Warm Wool
4. Fireside
5. Crimson Berries
6. Cinnamon Chai
7. Black Cherry
8. **NEW** Smoked Walnut & Maple
9. Amber & Incense
10. Fraser Fir
11. **NEW** Indigo Suede
12. Evening Onyx
13. Winter Garland (Trilogy)
14. Hearthside (Trilogy)
15. Cosy Cabin (Trilogy)

## OPTION 2 | SINGLE WALL BAY

### • 12 Core Fragrances (Medium, Mini, and Ellipse)

### • 2 Trilogy Fragrances (Large, Medium and Ellipse)



1. Linen
2. Vanilla & Sea Salt
3. Warm Wool
4. Fireside
5. Crimson Berries
6. Cinnamon Chai
7. Black Cherry
8. **NEW** Smoked Walnut & Maple
9. Amber & Incense
10. Fraser Fir
11. **NEW** Indigo Suede
12. Evening Onyx
13. Winter Garland (Trilogy)
14. Hearthside (Trilogy)

# FRAGRANCE DESCRIPTIONS

Discover our complete assortment of refined fragrances.



## White Teak

A nuanced blend of aromas: crisp balsam branches mixed with sandalwood, and oak with hints of moss-of-tree and cedarwood.



## White Tea & Jasmine

Notes of pure white tea with a hint of jasmine gently blended with scents of red cedar and rose.



## Linen

The fresh scent of crisp, clean linen drying in a warm summer breeze.



## Island Coconut

Lush scents of juicy pineapple blended with creamy coconut create the perfect tropical treat.



## Coconut & Tonka

The scent of creamy white coconut milk combined with notes of almond, tonka bean and a touch of white cherry.



## Smoked Jasmine

Aromas of delicate jasmine petals laced with warm cedar and smoky incense.



## Solar Ylang

Scents of fresh bergamot arranged in a sweet white bouquet of jasmine, tuberose and ylang-ylang. Ending with musk and creamy sandalwood notes.



## Lavender & Cedar

Pink pepper and aromatic lavender are layered with notes of sage flower, patchouli, and blonde woods.



## Fireside

Our signature fragrance balances the rich scents of amber, vetiver and musk to perfectly capture the essence of a perfect evening by a warm fire.



## Warm Wool

Dreamy scents of warm wool and wild flowers for the perfect finishing touch in any room.



## Wood Smoke

The warming scents of cedar and glowing embers reminiscent of a crackling fire.



## Sacred Smoke

The scents of Palo Santo woods mingle with spiced clove as well as musky deep notes.



## Sand & Driftwood

A perfectly balanced fragrance: notes of sun-washed wood, sea grass, and soft white sand.



## Amber & Incense

Rich notes of amber and sandalwood with smoky undertones of exotic spices and herbs.



## Oudwood

Scents of alluring amber and aromatic oudwood fused with creamy vanilla and undertones of smoked incense.



## Humidor

A rich blend of notes: tobacco leaves, soft suede, and peach blossom.



## Stone Washed Suede

Fiery pepper, sweet jasmine and enticing amber enliven the familiar scent of stone-washed suede.



## Vanilla Bean

Indulge in the rich, sumptuous scent of vanilla bean.



## White Honey

Scents of sweet candied orange blossom with cascading vanilla orchid and roasted toffee.



## Golden Milk

Notes of sweet milk and exotic spices mix with a swirl of floral notes - frangipani, gardenia and tuberose



## Lemongrass & Lily

Green, floral scents are complemented by subtle hints of sweet lemon and grapefruit for a refreshing, herbal experience.



## Seaside Mimosa

A blend of juicy citrus and sparkling wine notes make this scent as refreshing as a cold drink on a summer shore.



## Chilli Pepper Gelato

Spicy red chillies and aromatic citrus fragrances softened with sweet notes of creamy coconut and vanilla bean.



#### **Crimson Berries**

Aromas of juicy Christmas berries blended with a touch of warm spice and mistletoe essence.



#### **Vanilla & Sea Salt**

The scent of soft vanilla blossoms swirled with notes of sea salt and jasmine.



#### **Suede & Sandalwood**

Fragrant notes of ylang ylang, vanilla and suede, wrapped in a cosy layer of milky sandalwood.



#### **Pomegranate**

Crisp, complex pomegranate notes with cassis, soft florals, and rich undertones of rum and musk.



#### **Spiced Blackberry**

A delightfully rich blackberry and cinnamon filling inside a flaky, vanilla-drizzled Danish.



#### **Black Peppercorn**

A peppery blend of earthy spices surrounded by sweet amber and creamy sandalwood aromas.



#### **Currant**

A refreshing blend of sweet currant notes with a hint of juicy tangerine.



#### **Black Plum Cognac**

The essence of succulent black plum and blackberry soaked in delicious cognac.



#### **Frasier Fir**

Aromatic notes are expertly combined to create the essence of fresh-cut fir on a crisp winter morning.



#### **Cinnamon Chai**

Relish the warm, intoxicating aroma of spicy cinnamon and rich vanilla notes



#### **Lavender Spa**

Recreate a day at the spa with the relaxing scents of specially blended lavender and eucalyptus essential oils.



#### **NEW | Juniper & Spruce**

The freshness of juniper berry, blue spruce and frosted sage scents, perfectly balanced with notes of turberose and cedar.



#### **Black Cherry**

The indulgent sweet scents of juicy, ripe black cherries.



#### **Soft Chambray**

Relaxing and clean, this fragrance envelopes the senses with soft fabric and a subtle kiss of jasmine and rose.



#### **NEW | Elderberry Bourbon**

A richly complex fragrance - a blend of deep scents of red berries and aged wood, combine with bourbon and clove aromas.



#### **Melon & Pink Quartz**

A sun-drenched fragrance combination of melon, cucumber and crystalline pink quartz, traced with violet leaf and lemon blossom.



#### **Seaside Neroli**

A fresh oceanside breeze of driftwood and waterlily notes, with the sweetened scent of neroli blossom and zesty mandarin.



#### **NEW | Indigo Suede**

An enticing pairing of leather and patchouli scents, layered with notes of violet, cypress and amber.



#### **Coastal Sunset**

Experience the warm glow of the coast with nuanced scents of sun-kissed blossoms, creamy coconut, and salty ocean air.



#### **Evening Onyx**

This deep fragrance palette of jasmine leaf, black orchid, and sandalwood is a mysterious treat for the senses.



#### **NEW | Smoked Walnut & Maple**

Aromas of smoked wood and toasted nut combine with notes of sweet natural maple to create a tempting scent.



#### **Rosewood**

Roseberry and soothing tea accords unite with notes of cedarwood and musk.

FRAGRANCE  
GUIDE



	COLOUR	PETITE	MINI	MEDIUM	LARGE	ELLIPSE
AMBER & INCENSE		66041E	98041E	92041E	93041E	76041E
BLACK CHERRY		66100E	98100E	92100E	93100E	76100E
BLACK PEPPERCORN		1666253E	1666277E	1666265E	1666271E	1666259E
BLACK PLUM COGNAC		66023E	98023E	92023E	93023E	76023E
CHILLI PEPPER GELATO		1681465E	1681493E	1681479E	1681486E	1681472E
CINNAMON CHAI		66104E	98104E	92104E	93104E	76104E
COASTAL SUNSET		66049E	98049E	92049E	93049E	76049E
COCONUT & TONKA		1681461E	1681489E	1681475E	1681482E	1681468E
CRIMSON BERRIES		66080E	98080E	92080E	93080E	76080E
CURRENT		66117E	98117E	92117E	93117E	76117E
<b>NEW</b> ELDERBERRY BOURBON		1694642E	1694658E	1694650E	1694654E	1694646E
EVENING ONYX		66050E	98050E	92050E	93050E	76050E
FIRESIDE		66106E	98106E	92106E	93106E	76106E
FRASIER FIR		66175E	98175E	92175E	93175E	76175E
GOLDEN MILK		1647902E	1647932E	1647918E	1647924E	1647908E
HUMIDOR		66032E	98032E	92032E	93032E	76032E
<b>NEW</b> INDIGO SUEDE		1694639E	1694655E	1694647E	1694651E	1694643E
ISLAND COCONUT		66115E	98115E	92115E	93115E	76115E
<b>NEW</b> JUNIPER & SPRUCE		1694641E	1694657E	1694649E	1694653E	1694645E
LAVENDER & CEDAR		1666254E	1666278E	1666266E	1666272E	1666260E
LAVENDER SPA		66492E	98492E	92492E	93492E	76492E
LEMONGRASS & LILY		66065E	98065E	92065E	93065E	76065E
LINEN		66135E	98135E	92135E	93135E	76135E
MELON & PINK QUARTZ		1681459E	1681487E	1681473E	1681480E	1681466E

Dimensions:

PETITE CANDLE  
PLUSWICK® INNOVATION  
H: 29mm  
W: 64mm  
D: 64mm

MINI JAR  
PLUSWICK® INNOVATION  
H: 83mm  
W: 70mm  
D: 70mm

MEDIUM JAR  
PLUSWICK® INNOVATION  
H: 114mm  
W: 99mm  
D: 99mm

LARGE JAR  
PLUSWICK® INNOVATION  
H: 178mm  
W: 102mm  
D: 102mm

ELLIPSE JAR  
HEARTHWICK® FLAME  
H: 92mm  
W: 121mm  
D: 191mm



	COLOUR	AUTO REEDS STARTER KITS	AUTO REEDS REFILLS
AMBER & INCENSE		x	x
BLACK CHERRY		x	1657112E
BLACK PEPPERCORN		x	x
BLACK PLUM COGNAC		x	x
CHILLI PEPPER GELATO		x	x
CINNAMON CHAI		x	1657107E
COASTAL SUNSET		1670136E	1657117E
COCONUT & TONKA		x	x
CRIMSON BERRIES		x	x
CURRENT		x	x
<b>NEW</b> ELDERBERRY BOURBON		x	x
EVENING ONYX		x	x
FIRESIDE		1670135E	1657104E
FRASIER FIR		x	x
GOLDEN MILK		x	x
HUMIDOR		x	x
<b>NEW</b> INDIGO SUEDE		x	x
ISLAND COCONUT		x	x
<b>NEW</b> JUNIPER & SPRUCE		x	x
LAVENDER & CEDAR		x	x
LAVENDER SPA		x	1657110E
LEMONGRASS & LILY		x	x
LINEN		1670137E	1657109E
MELON & PINK QUARTZ		x	x

#### AUTO REEDS STARTER KITS

H: 155mm  
W: 26mm  
D: 89mm

#### AUTO REEDS REFILLS

H: 155mm  
W: 11mm  
D: 89mm

FRAGRANCE  
GUIDE



	COLOUR	PETITE	MINI	MEDIUM	LARGE	ELLIPSE
OUWOOD		66247E	98247E	92247E	93247E	76247E
POMEGRANATE		66194E	98194E	92194E	93194E	76194E
ROSEWOOD		66025E	98025E	92025E	93025E	76025E
SACRED SMOKE		66022E	98022E	92022E	93022E	76022E
SAND & DRIFTWOOD		66378E	98378E	92378E	93378E	76378E
SEASIDE MIMOSA		66085E	98085E	92085E	93085E	76085E
SEASIDE NEROLI		1681463E	1681491E	1681477E	1681484E	1681470E
SMOKED JASMINE		66038E	98038E	92038E	93038E	76038E
<b>NEW</b> SMOKED WALNUT & MAPLE		1694640E	1694656E	1694648E	1694652E	1694644E
SOFT CHAMBRAY		66086E	98086E	92086E	93086E	76086E
SOLAR YLANG		1647903E	1647933E	1647919E	1647925E	1647909E
SPICED BLACKBERRY		66078E	98078E	92078E	93078E	76078E
STONE WASHED SUEDE		1666255E	1666279E	1666267E	1666273E	1666261E
SUEDE & SANDALWOOD		66024E	98024E	92024E	93024E	76024E
VANILLA BEAN		66112E	98112E	92112E	93112E	76112E
VANILLA & SEA SALT		66191E	98191E	92191E	93191E	76191E
WARM WOOL		66052E	98052E	92052E	93052E	76052E
WHITE HONEY		66026E	98026E	92026E	93026E	76026E
WHITE TEAK		66039E	98039E	92039E	93039E	76039E
WHITE TEA & JASMINE		66062E	98062E	92062E	93062E	76062E
WOOD SMOKE		66075E	98075E	92075E	93075E	76075E

Dimensions:

PETITE CANDLE  
PLUSWICK® INNOVATION  
H: 29mm  
W: 64mm  
D: 64mm

MINI JAR  
PLUSWICK® INNOVATION  
H: 83mm  
W: 70mm  
D: 70mm

MEDIUM JAR  
PLUSWICK® INNOVATION  
H: 114mm  
W: 99mm  
D: 99mm

LARGE JAR  
PLUSWICK® INNOVATION  
H: 178mm  
W: 102mm  
D: 102mm

ELLIPSE JAR  
HEARTHWICK® FLAME  
H: 92mm  
W: 121mm  
D: 191mm



AUTO REEDS  
STARTER KITS

AUTO REEDS  
REFILLS

	COLOUR		
LOUDWOOD		x	x
POMEGRANATE		x	x
ROSEWOOD		x	x
SACRED SMOKE		x	x
SAND & DRIFTWOOD		x	1657118E
SEASIDE MIMOSA		x	x
SEASIDE NEROLI		x	x
SMOKED JASMINE		x	x
<b>NEW</b> SMOKED WALNUT & MAPLE		x	x
SOFT CHAMBRAY		x	x
SOLAR YLANG		x	x
SPICED BLACKBERRY		x	x
STONE WASHED SUEDE		x	x
SUEDE & SANDALWOOD		x	x
VANILLA BEAN		x	1657105E
VANILLA & SEA SALT		x	1657116E
WARM WOOL		x	x
WHITE HONEY		x	x
WHITE TEAK		x	x
WHITE TEA & JASMINE		x	1657115E
WOOD SMOKE		x	x

AUTO REEDS  
STARTER KITS

H: 155mm  
W: 26mm  
D: 89mm

AUTO REEDS  
REFILLS

H: 155mm  
W: 11mm  
D: 89mm



© 2021 Newell Brands. All rights reserved. Entire text, photographs and packaging are copyrighted subject matter belonging to Newell Brands. No portion may be reproduced without prior written approval.

**WW**  
**WoodWick®**  
—crackles as it burns™—

Yankee Candle Company (Europe) Limited,  
Poplar Way East, Cabot Park, Avonmouth, Bristol, BS11 0YH, United Kingdom  
Yankee Candle s.r.o.,

Průmyslová zóna Joseph, Havraň u Mostu, 435 01, Czech Republic | Tel: 008 008 658 8466  
Tel: +44 (0)117 316 1200 Fax: +44 (0)117 316 1400 | Email: HFCustomerCare@Newellco.com | [www.woodwick.co.uk](http://www.woodwick.co.uk)  
A Subsidiary of Newell Brands

1. **Identify the problem.** The first step is to identify the problem. This involves understanding the symptoms, the context, and the impact of the problem.

2. **Analyze the problem.** The second step is to analyze the problem. This involves identifying the causes of the problem and the factors that contribute to it.

3. **Develop a solution.** The third step is to develop a solution. This involves identifying the best course of action to address the problem.

4. **Implement the solution.** The fourth step is to implement the solution. This involves putting the solution into practice and monitoring its progress.

5. **Evaluate the solution.** The fifth step is to evaluate the solution. This involves assessing the effectiveness of the solution and making any necessary adjustments.

Age Group	Percentage
18-24	10%
25-34	15%
35-44	20%
45-54	25%
55-64	30%
65-74	35%
75-84	40%
85+	45%



INDULGE — *your* — SENSES